

## C12 Port de Macinaggio

⊕35 42°57'.8N 09°27'.4E

### Charts

Admiralty 1425  
French 6822, 6850

### Depth

1.5m to 3.5m

### Number of berths

585 with 200 for visitors

### Maximum length

30m

### Lights

**0854 Jetée Est head** 42°57'.7N 9°27'.3E  
FI(2)WR.6s8m11/8M White tower, red top 8m 120°-R-  
218°-W-331°-R-120°  
**0854.4 Jetée Nord head** FI(2)G.6s4m2M White tower,  
green top 2m  
**0903(I) Finocchiarola** 49°59'.5N 9°28'.7E Q(3)5s4m6M †  
card BYB light buoy located 2M NNE of port and ½M  
NE of Iles Finocchiarola

### From the south

**0855 Capo Sagro** 42°47'.7N 09°29'.5E FI(3).12s10M  
White tower, green top 4m

### Port radio

VHF Ch 9 ☎ 04 95 35 42 57 Fax 04 95 35 47 00 (S0700-  
2100, OoS 0800-1200,1400-1800)  
Email portu.paul-luigi.macinaggio@wanadoo.fr

### Warnings

Heavy swell from the NE-E will break near the entrance and make it dangerous to enter. Strong gusts of wind from SW-W sometimes occur. Depths in the harbour may be different to the plan due to periodic dredging. No anchoring is allowed in the port.



## A very popular harbour

This yacht harbour, which was constructed in 1971, is based on an old fishing harbour and has managed to maintain some of the attractiveness of the original. The surrounding area is beautiful and the small village pleasant in an unsophisticated way but inevitably the tourist industry development is spoiling the old charm. Approach and entry are easy but would be hazardous in heavy seas from NE-E. Protection within is good, though a heavy swell from the NE-E makes it uncomfortable. Facilities are reasonable and everyday requirements can be met. The harbour becomes very crowded in the summer as it is usually the first stop of Italians coming from the Ligurian or Tuscan coasts.

### Approach

#### By day

*From the south* The coastline is broken by many small bays but it lacks any conspicuous landmarks. The houses, tower and small harbour at Erbalunga, the villages of Sisco and Portocciolo, both of which have training walls at the mouths of their rivers, and the small harbour at Luri may be identified. In the closer approach, the village of Macinaggio will be seen but not until the bay opens up. A conspicuous radar and TV tower and dome are located 3M to the west on the skyline.

*From the north* Directly or via Cap Corse, heading either inside or outside the Ile de la Giraglia (conspicuous with a lighthouse and signal station on top). Follow the coast round and in bad weather give it a ½M berth to avoid the Banc de Santa Maria (9.5m). Pass outside the light buoy listed above and round the Iles Finocchiarola, which extends ½M from the coast and has a tower on the top of the outer island. The houses of Macinaggio will be seen from here.

#### By night

Approach using the following lights:

**0852 Cap Corse, Ile de la Giraglia** 43°01'.6N 9°24'.4E

Fl.5s85m28M White tower, black top, 26m

**1404 Punta del Trattoio** 43°1'.3N 9°47'.5E Fl.8s150m9M

White house (this is on Capraia, an island 15M west of Giraglia)

Then use the Jetée Est light to approach the entrance.

#### By GPS

Steer for ⊕35 from the eastern quadrant.

### Entrance

#### By day

Approach the head of the Jetée Est which has a conspicuous white light tower, red top, on a course between NW and SW and round it onto a southerly course, leaving it 20m to port.

## S14 Palau

⊕90 41°11'.0N 09°23'.25E (free for 2 hours)

### Charts

Admiralty 1213, 1212  
Italian 42, 324, 282

### Depth

2.4m in harbour

### Number of berths

380

### Maximum length

18m

### Lights

0988 Punta Palau 41°11'.2N 9°22'.9E Fl(2)G.10s15m4M  
White tower, green band 10m  
0990 Outer Mole head 41°10'.9N 9°23'.2E  
2FGR(vert)6m3M Red and green striped post  
0990.6 Shelter Mole head F.G.6m3M Green post 5m  
0990.4 Breakwater head F.R.6m3M Red post 5m  
0990.2 Secca due Piagge 41°10'.9N 9°23'.3E  
VQ(9)10s5m5M ⚓ card buoy YBY (250m at 065° from  
outer mole head)

### Port communications

Local Maritime Authorities VHF Ch 16, 9

☎ 0789 709 419

Commune ☎ 0789 708 435

Email portoturistico@palau.it

url www.palau.it/portoturistico.asp

### Warnings

There is an extensive reef of rocks, Secca due Piagge, extending over 400m from the eastern shore and marked with a ⚓ cardinal buoy. There are many ferries using the outer mole and all commercial traffic has right of way, so keep fairly close to this buoy on a southerly course to give the ferries as much room as possible.

## A typical busy ferry port

At one time Palau was a small farming village. It is now a modern town which serves as an 'R and R' town for Americans stationed at the NATO base on Santo Stefano Island and as the mainland ferry port for La Maddalena. Having said that, it is still a pleasant town with reasonable shopping facilities.

### Approach

#### By day

A straightforward approach with the town easily identified. Ferries are constantly running between Palau and the islands and are useful for locating the harbour. The ⚓ cardinal buoy is also obvious as one gets close to the mole.

#### By night

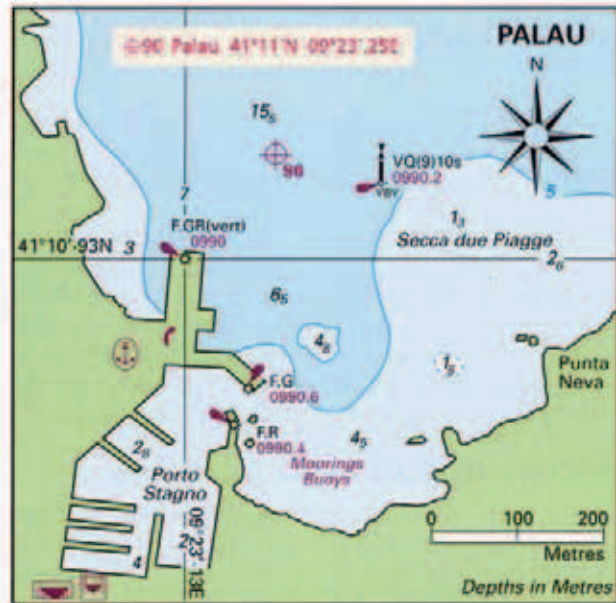
Use the light on Palau Point and the mole head fixed lights to approach.

#### By GPS

Steer to ⊕90 from the north. At the ⊕, the ⚓ cardinal buoy and ferry pier end should become obvious.

### Entrance

The entrance is simple but keep closer to the northern arm as there are rocks projecting northeast from the southern arm.



### Berths

There are floating pontoons and it is possible to go alongside the quay at the south end of the harbour. It is always crowded in the harbour. About 16 mooring buoys have been laid in the bay immediately to the east of the port and these can be used for half the usual fee for a marina berth. Note that anchoring is not recommended in the waters around Palau.

### Formalities

All authorities available.

### Facilities

All.

Palau mooring buoys outside marina

